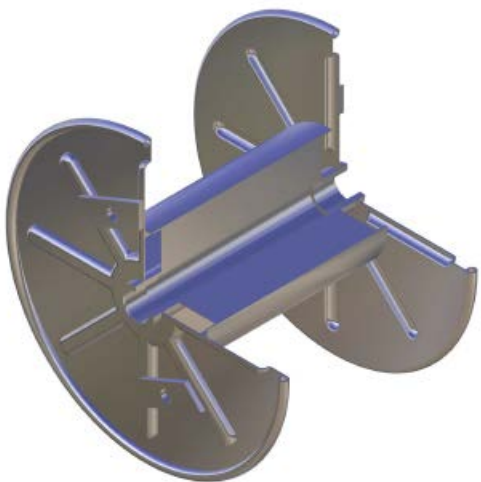
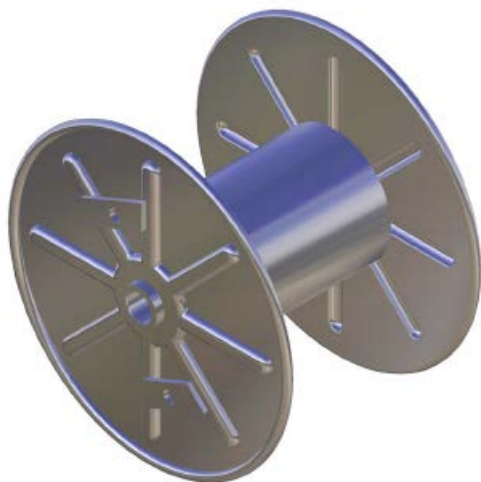
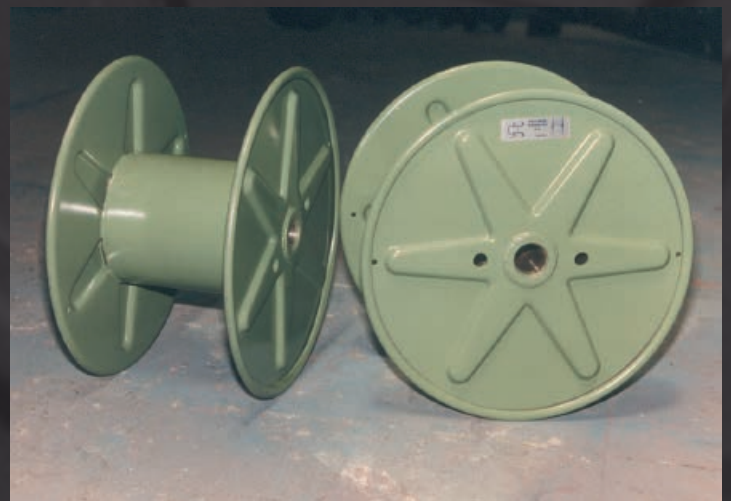


BOBINA EMBUTIDA

PRESSED-STEEL REEL



DIN-46395



La bobina de chapa embutida puede fabricarse con dimensiones según plano del cliente o bajo la norma DIN-46395.

NOTA:
Hasta lateral de diámetro 800mm.

Se pueden utilizar en procesos de fabricación, expedición o desechable.

The pressed-steel reels can be manufactured with dimensions according to plan of the client or under the norm DIN-46395.

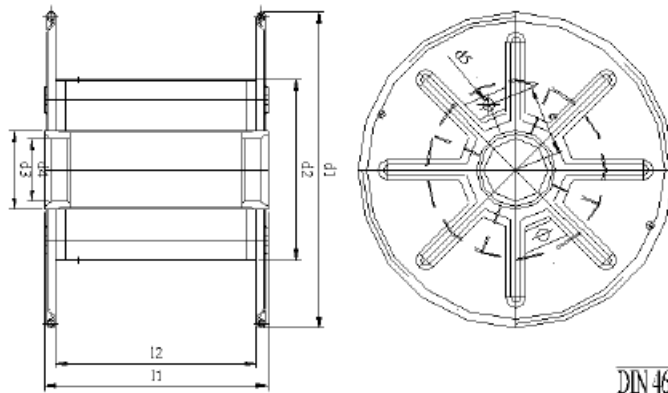
NOTE:
Until lateral of diameter 800mm.

To utilize in processes of production, expedition or scrap.

BOBINA EMBUTIDA

PRESSED-STEEL REEL

DIN-46395

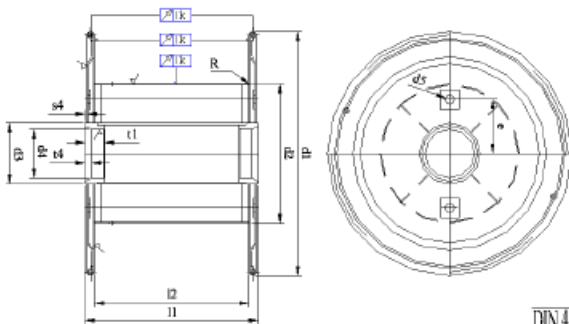
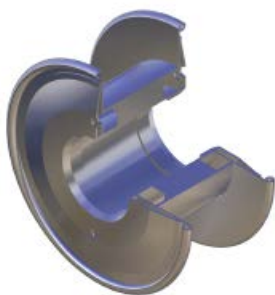


DIN 46395

d1	d2	d3	d4	d5	e	l1	l2	Volum dm
100	40	50	28	16	40	80	63	0.42
125	50					95	80	0.83
160	63					118	7.7	1.7
200	80	71	36		71	150	125	3.3
	100					125	100	2.35
250	100				190	160	6.6	
	125					150	125	4.6
315	125				190	200	13.1	
	160					190	160	9.2
355	140	112	56	32	112	265	224	18.7
	180					215	180	13.2
400	160				300	250	26.3	
	200					236	200	18.8
450	180				335	280	37.4	
	224					265	224	26.8
500	200	140	80	40	140	375	315	51.9
	250					300	250	36.8
560	224				425	335	73.4	
	280					335	280	51.7
630	250				475	400	105.1	
	315					375	315	72.5
710	355	32	80	40	32	530	450	133.6
800	400					600	500	188.6
900	250					670	560	267.2
1000	500					750	630	371.1
1120	560					850	710	524.6
1250	630					950	800	732.4

BOBINA DOBLE CHAPA

SHEET STAMPED REEL



DIN-46395

d1	d2	d3	d4	d5	e	l1	l2	Volum dm
315	125					236	200	13.1
	160					190	160	9.2
355	140					265	224	18.7
	180					215	180	13.2
400	160				112	300	250	26.3
	200					236	200	18.8
	180					335	280	37.4
450	224	112	56	32		265	224	26.8
	200					375	315	51.9
500	250					300	250	36.8
	224				140	425	335	73.4
280				335		280	51.7	
560	250					475	400	105.1
	315					375	315	72.5
710	355					530	450	133.6
800	400					600	500	188.6
900	250				32	670	560	267.2
1000	500	160	80	40		750	630	371.1
1120	560					850	710	524.6
1250	630					950	800	732.4

DIN-46395 DIN-46397



La bobina de chapa estampada puede fabricarse con dimensiones requeridas por el cliente o bajo las norma DIN-46395 o DIN-46397 en todas sus variantes.

Uso para hilos férricos, no férricos y cable.

Bobina equilibrada dinámicamente para velocidades de hasta 3000 rpm.

The sheet stamped reel can be manufactured under the dimensions required by the client or under the norms DIN-46395 or DIN-46397 in all its varieties.

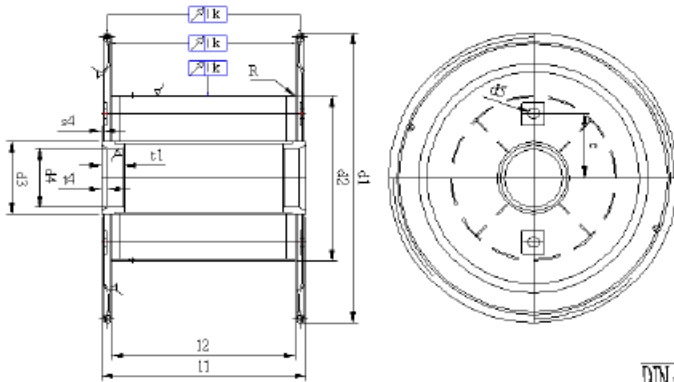
Use for ferric and not ferric threads and cable.

The reels are balanced dynamically for velocities of until 3000 rpm.

BOBINA DOBLE CHAPA

SHEET STAMPED REEL

DIN-46395 DIN-46397

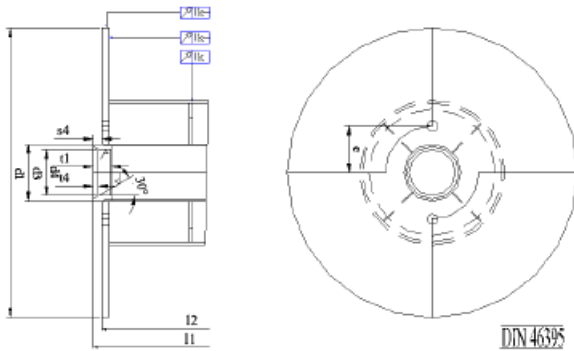
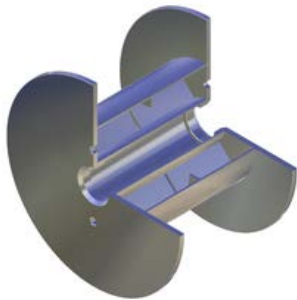
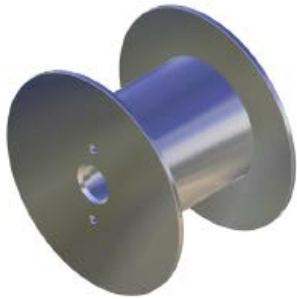


DIN 46397

d1	d2	d3	d4	l1	l2	d5	e	t1	t4	t5	v1 dm
315	180	160	127	236	200	16	100	63	20	5	10.5
	200										9.3
	224										7.7
355	180	160	127	212	180	16	100	63	20	5	12.2
	200			15.1							
	224			13.3							
	250			11.2							
400	224	160	127	236	200	16	100	63	20	5	17.3
	224			21.6							
	250			19.1							
	280			16							
	250			24.6							
450	250	160	127	205	224	16	100	63	20	5	30.8
	280			27.3							
	315			22.7							
	280			33.7							
500	280	160	127	300	250	28	100	63	20	5	42.5
	315			37.5							
	355			30.7							
	315			47.1							
560	315	160	127	335	280	28	100	63	20	5	58.8
	355			52.3							
	400			43.8							
	355			47.1							
630	355	160	127	375	315	28	100	63	20	5	58.8
	400			52.3							
	450			43.8							
	400			47.1							
710	400	300	250	425	355	40	170	125	40	5	95.9
	450			123.6							
	500			106.6							
	500			89.8							
800	450	300	250	475	400	40	170	125	40	5	137
	500			172							
	500			153							
	560			128							
1000	500	200	250	750	630	50	250	125	40	5	340
	630			298							
	710			245							
1250	710	300	250	950	800	50	250	125	40	5	665
	800			580							
	900			473							

BOBINA MECANIZADA

MECHANIZED STEEL REEL



DIN-46395

d1	d2	d3	d4	d5	e	l1	l2	Volum dm
315	125					236	200	13.1
	160					190	160	9.2
355	140					265	224	18.7
	180					215	180	13.2
400	160	112	56	32	112	300	250	26.3
	200					236	200	18.8
450	180					335	280	37.4
	224					265	224	26.8
500	200					375	315	51.9
	250					300	250	36.8
560	224					425	335	73.4
	280				140	335	280	51.7
630	250					475	400	105.1
	315					375	315	72.5
710	355					530	450	133.6
800	400					600	500	188.6
900	250	160	80	40	32	670	560	267.2
1000	500					750	630	371.1
1120	560					850	710	524.6
1250	630					950	800	732.4

DIN-46395 DIN-46397



Las variantes de la bobina de acero mecanizada son:

- Laterales no mecanizados, núcleo y buje mecanizados.
- Totalmente mecanizada.

Las dimensiones de esta bobina serán según cliente o según normas DIN-46395 o DIN-46397.

Para hilos férricos y no férricos. Trefilado, cableadoras y multifilares.

La bobina totalmente mecanizada es equilibrada para velocidades de hasta 3000 rpm.

The variants of the mechanized steel reel are:

- Lateral not mechanized, nucleus and axis mechanized.
- Totally mechanized.

The dimensions of this reel will be according by client or under the norms DIN-46395 or DIN-46397.

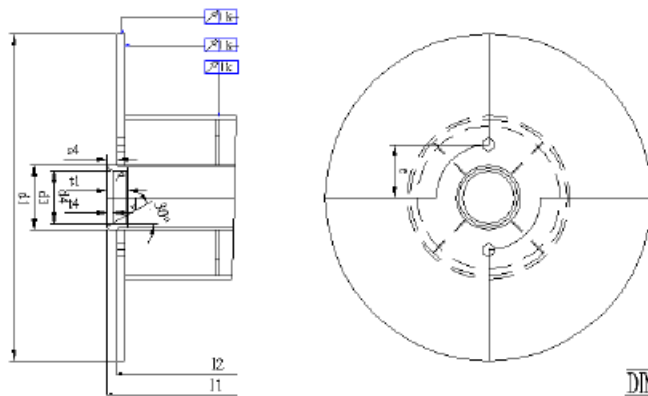
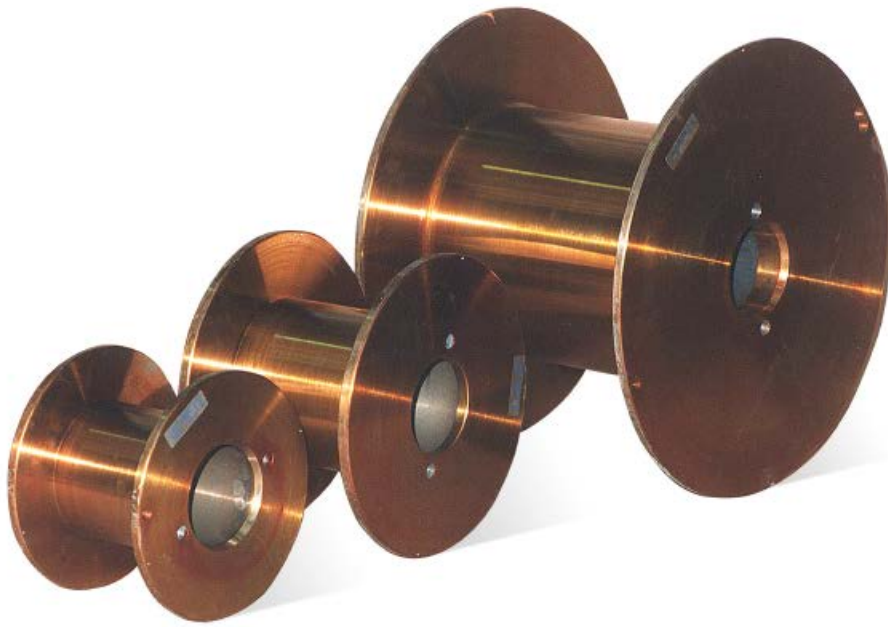
For ferric and non ferric threads. Reels for multiwire drawing and wire drawing.

The totally mechanized reel is balanced for velocities to 3000 rpm.

BOBINA MECANIZADA

MECHANIZED STEEL REEL

DIN-46395 DIN-46397

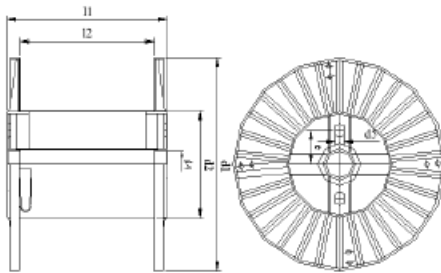
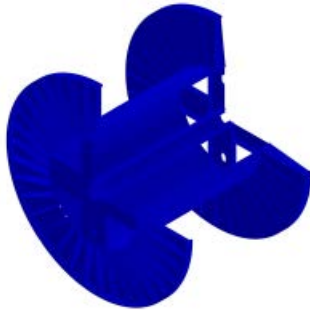
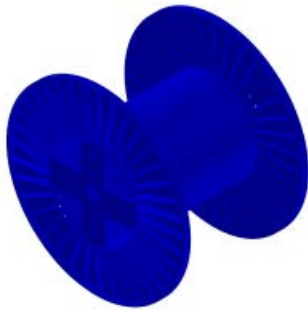


DIN 46397

d1	d2	d3	d4	l1	l2	d5	e	t1	t4	t5	v1 dm
315	180	160	127	236	200	16	100	63	20	5	105
	200										93
	224										77
355	180	160	127	212	180	16	100	63	20	5	122
	200			265	224						151
	224										133
	250										112
400	224	160	127	236	200	16	100	63	20	5	173
	224			300	250						216
	250										191
	280										16
450	250	160	127	265	224	16	100	63	20	5	246
	250			335	280						308
	280										273
	315										227
500	280	160	127	300	250	16	100	63	20	5	337
	280			375	315						425
	315										375
	355										307
560	315	160	127	335	280	16	100	63	20	5	471
	315			425	355						598
	355										523
	400										428
630	355	160	127	375	315	16	100	63	20	5	471
	355			475	400						598
	400										523
	450										428
710	400	300	250	425	355	40	170	125	40	5	958
	400			530	450						121.6
	450										106.6
	500										89.8
800	450	300	250	475	400	40	170	125	40	5	137
	450			600	500						172
	500										153
	560										128
1000	560	300	250	750	630	50	250	125	40	5	340
	630										298
	710										245
1250	710	300	250	950	800	50	250	125	40	5	665
	800										580
	900										473

BOBINA ALA PLISADA

TRANSPORT REEL



DIN 46391

d1	d2	d4	d5	e	l1	l2	Volum dm		
710	355	80	30	100	550	400	119		
800	400		40				151		
900	450		50	160	710	560	267.2		
1000	500				900	710	330		
1250	630		125	65	300	1120	900	650	
1400	710							812	
1500	800				1360	1120	1357		
1800	1000						1583		
2000	1000				400	1450	1220	2928	2638
2000	1250								2144
2240	1120	1450			1220	1300	1120	4121	3309
2240	1400								4109
2500	1250	1450			1220	1690	1380	4983	4121
2500	1400								3534
2500	1600	1690	1380	2000	1600	7238	4109		
2800	1800						4983		
3000	1800	140	600	2000	1600	7442	6283		
3000	2000						7442		
3150	1800	2000	1600	2000	1600	7442	8397		
3150	2000						9076		
3390	2000	2000	1600	2000	1600	7442	7103		
3390	2360						10810		
3550	2000	2360	1600	2000	1600	7442	8837		
3550	2360						8837		

DIN-46391 DIN-46395



Bobina para cable, cuerda o cableados.

Dimensiones según especificaciones del cliente o según normas DIN-46391 o DIN-46395.

En sus variantes encontramos la bobina desechable para expediciones y la reutilizable.

Reel for cable or cord.

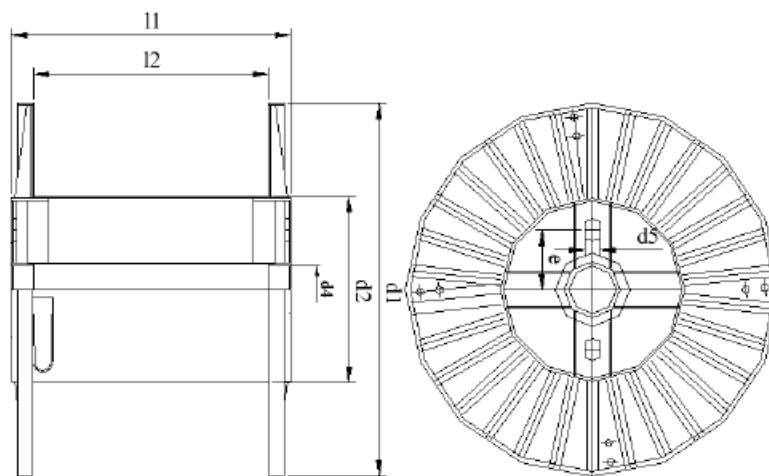
Dimensions according to specifications of the client or according to the norms DIN-46391 or DIN-46395.

In its variants we find the scrap reel for expeditions and the returnable.

BOBINA ALA PLISADA

TRANSPORT REEL

DIN-46391 DIN-46395

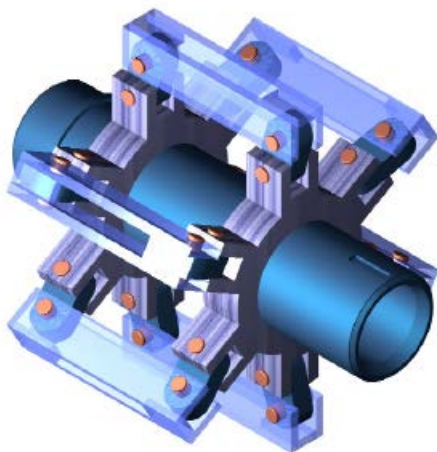
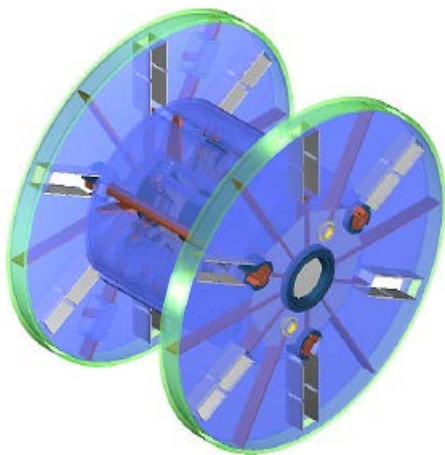


DIN 46395

d1	d2	d3	d4	d5	e	l1	l2	Volum dm
800	400	160	80	40	160	600	500	188.6
900	450					670	560	267.2
1000	500					750	630	371.1
1120	560					850	710	524.6
1250	630					950	800	732.4
1400	710					1060	900	1029
1600	800	200	100	63	300	1180	1000	1508
1800	1000					1320	1120	1970.4
2000	1120					1500	1250	2695.5
2240	1250					1700	1400	3799
2500	1500					1900	1600	5026.5
2800	1800					2120	1800	6503

BOBINA DESMONTABLE

COLLAPSIBLE REEL



La bobina desmontable tiene dos variantes, cierre por buje central y cierre por 4 tornillos.

Sus otras posibles variantes serán 4 o 6 atadas y las dimensiones de éstas.

Las dimensiones de esta bobina serán por especificación del cliente.

The collapsible reel has two variants, close by central axis and close for 4 screws.

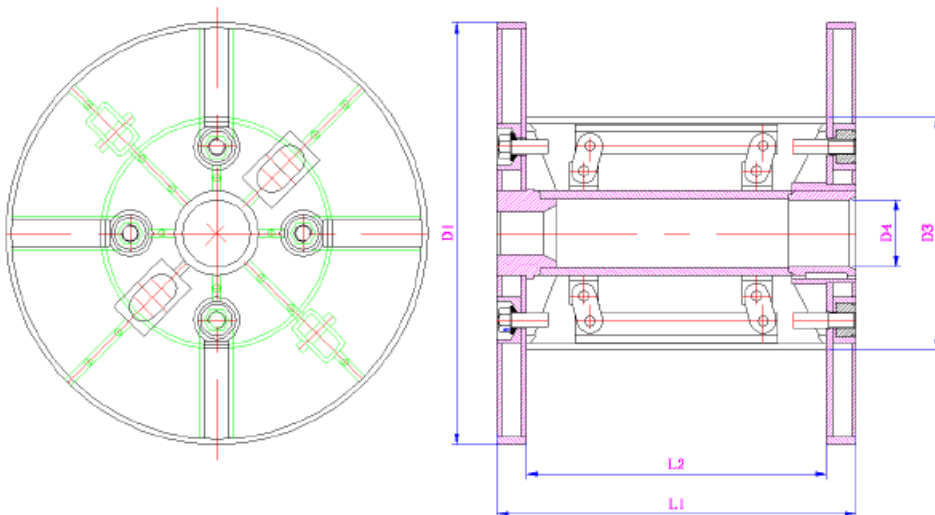
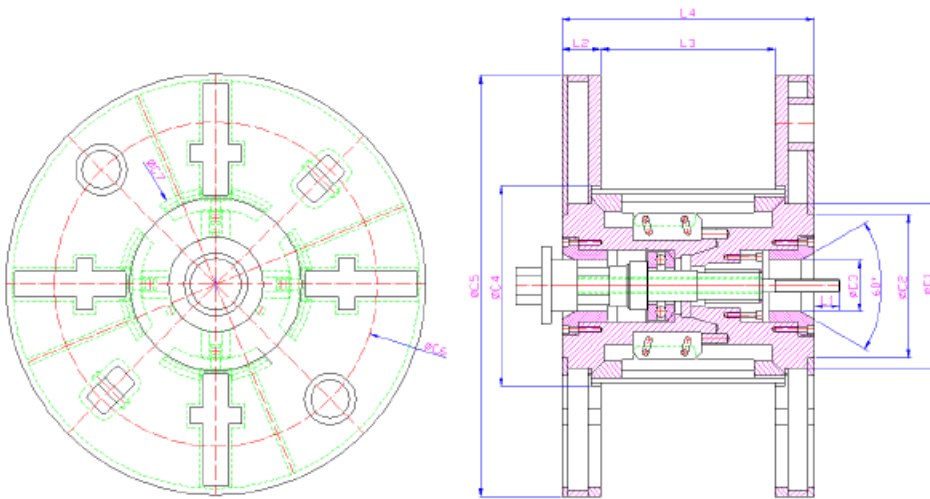
Its other possible variants will be 4 or 6 tied and the dimensions of these.

The dimensions of this reel will be depending on client specifications.

BOBINA DESMONTABLE

COLLAPSIBLE REEL

DISEÑOS



PALÉS Y CESTAS METÁLICAS

PALLETS AND METALLIC BASKET



Palés:

Fabricados según norma DIN o especificaciones del cliente.

Cestas metálicas:

Para proceso de trefilería o transporte de alambre de acero o cobre. Estas cestas serán fabricadas bajo especificaciones del cliente.

Pallets:

Manufacturing according to norm DIN or specifications of the client.

Metallic baskets:

Are able to be used in drawing process of fof copper or steel wire transport. They are manufactured under client specifications.

PALÉS Y CESTAS METÁLICAS

PALLETS AND METALLIC BASKET

